

# 700 | Special Elements

## HUZ-PL 32 / Gripper with Stroke, Precision Slide, Lightweight



**Remarks:**

**Application:** strong double-acting gripper on stroke with precision slide for demoulding tasks

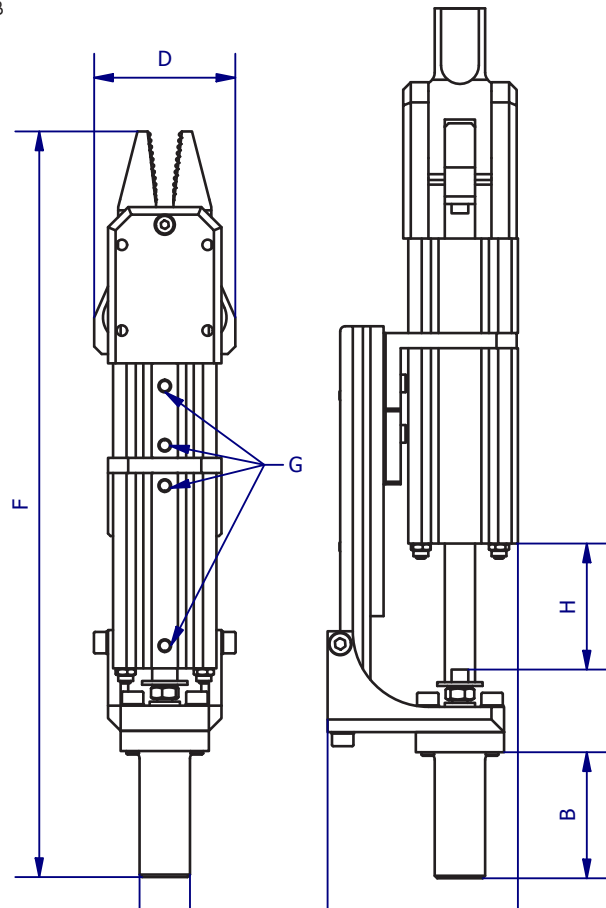
- weight-reduced variant, with the same strokes and forces as the conventional P variants
- can be easily upgraded with Stopover ZSM: HUZ-P becomes HUZ-PZ
- new sliding guide
- free from floating due to spring-loaded sliding elements
- wear is compensated by spring
- double-acting gripper
- end positions of cylinders can be monitored
  - » closing force measured at the point of the jaws at 6 bar
  - » maximum air pressure is 6 bar, use dry and filtered air only

**Variants:**

- C part present sensor IEK 8
- CS part present sensor IES 8

**Accessories e.g.:**

- Sensor ICS 8 for monitoring cylinder (Part No. 1-808-36-00)
- Stroke Reducer DB
- Stopover ZSM



Part No.	Description	Closing force max. [N]	Pistons Ø [mm]	Stroke H [mm]	A [mm]	B [mm]	D [mm]	E [mm]
1-738-22-00	HUZ-PL 32-50	350	32	50	20	50	56	75.5
1-738-23-00	HUZ-PL 32-50 C	350	32	50	20	50	56	75.5
1-738-24-00	HUZ-PL 32-50 CS	350	32	50	20	50	56	75.5

Part No.	Description	F Default position [mm]	G ["°][mm]	Part present control	Part present control with plug	Weight [g]
1-738-22-00	HUZ-PL 32-50	296	M5			1060
1-738-23-00	HUZ-PL 32-50 C	296	M5	x		1128
1-738-24-00	HUZ-PL 32-50 CS	296	M5		x	1091

## HUZ-PL 32 D / Gripper with Double-Stroke, Precision Slide, Lightweight

**Remarks:**

**Application:** strong double-acting gripper on double-stroke (feeding and demoulding stroke) with precision slide, e.g. for demoulding bumpers

- weight-reduced variant, with the same strokes and forces as the conventional P variants
- new sliding guide
- free from floating due to spring-loaded sliding elements
- wear is compensated by spring
- double-acting gripper
- end positions of cylinders can be monitored
  - » closing force measured at the point of the jaws at 6 bar
  - » maximum air pressure is 6 bar, use dry and filtered air only

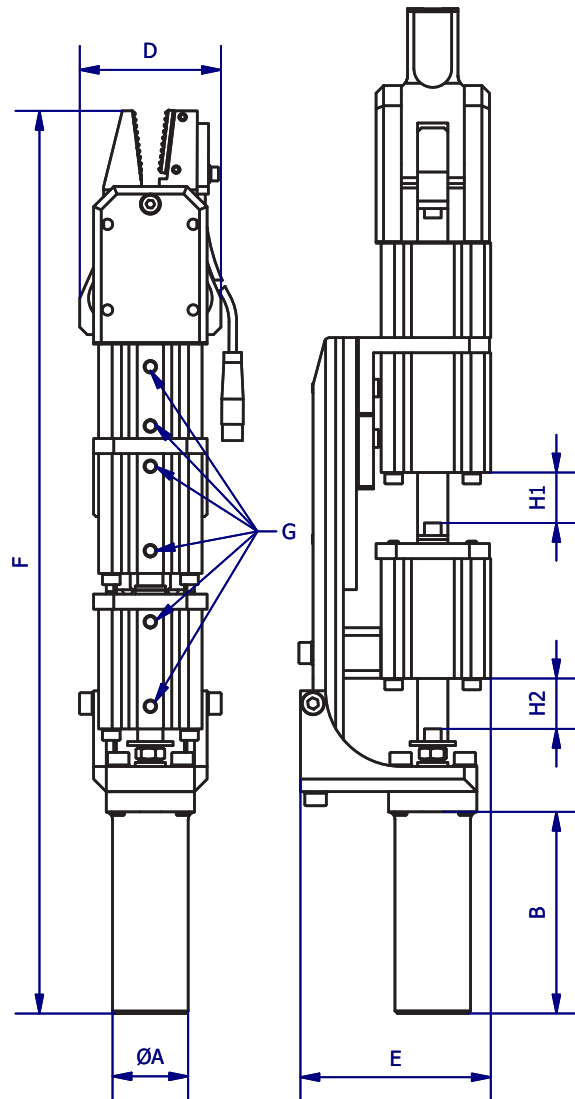


**Variants:**

CS part present sensor IES 8

**Accessories e.g.:**

- Sensor ICS 8 for monitoring cylinder (Part No. 1-808-36-00)
- Stroke Reducer DB



Part No.	Description	Closing force max. [N]	Pistons Ø [mm]	Stroke H1 [mm]	Stroke H2 [mm]	A [mm]	B [mm]	D [mm]	E [mm]
1-738-67-00	HUZ-PL 32-20-20 CS	350	32	20	20	30	80	56	75,5

Part No.	Description	F [mm]	G [mm]	Part present control with plug	Weight [g]
1-738-67-00	HUZ-PL 32-20-20 CS	358	M5	x	1282

**000**  
Quick Change Systems

**050**  
Profiles  
Channel Nuts

**100/115**  
Clamps

**120**  
Profile  
Connectors

**190**  
Profile  
Accessories

**200**  
Vacuum Cup  
Connectors

**220**  
Vacuum Cups

**224**  
Special  
Vacuum Cups

**230**  
Manifold

**290**  
Adapters for  
Vacuum Cups

**300**  
Gripper Arms

**400**  
Gripper  
Parallel Gripper

**450**  
Gripper Fingers

**460**  
Needle Gripper

**600**  
Nipper Bodies

**610**  
Nipper Blades

**700**  
Special Elements

**800**  
Electrics and  
Sensors

**850**  
Pneumatics

**990**  
Tubular System  
Micro System

**990**  
PA-Forming  
Others